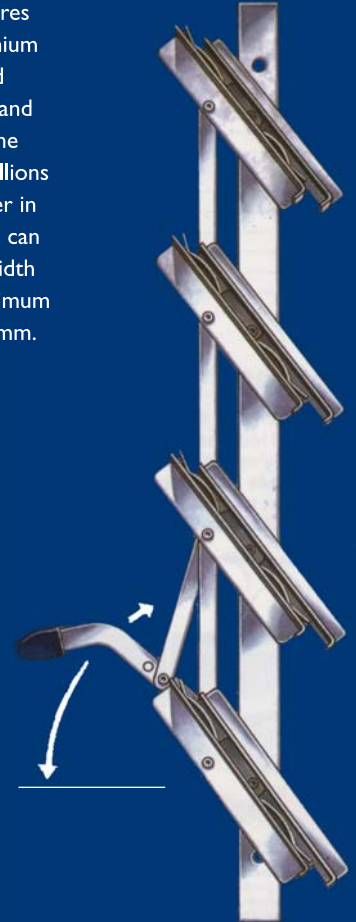


ULLRICH - TRIMLINE LOUVRES



TRIMLINE LOUVRES

A set of Cooper Louvres consists of two aluminium mullions with attached operating mechanism and channels for holding the glass blades. These mullions are not joined together in any way and therefore can be spaced to fit any width opening with the maximum recommended of 762mm.



BENEFITS AND FEATURES OF TRIMLINE LOUVRES

- Suitable for Hotels, Motels, Factories, Offices, Schools, Shops and Homes.
- Cyclone tested by the James Cook Cyclone Structural Testing Station, Townsville, Australia to wind load code AS1170.2 1989
- The ultimate in controlled ventilation with a combined locking and operating handle. Pivots are specially treated to give smooth control. It is recommended that a spot of light oil be placed on each pivot periodically. The plastic tipped handle ensures comfortable and firm control. Left hand control is standard.
- Manufactured from anodised aluminium extrusions, light-weight and available in natural anodised finish, as standard.
- Fitted with a patented security stop which prevents glass being removed when the louvre is locked in position. Glass blades are not supplied with the louvre fittings but are stocked by glass merchants in various types.

SIZES AVAILABLE

	NUMBER OF BLADES	OVERALL HEIGHT	
		mm	inches
Single Control Handle	2	304	12
	3	444	17 1/2
	4	584	23
	5	724	28 1/2
	6	863	34
	7	1003	39 1/2
	8	1143	45
	9	1283	50 1/2
	10	1422	56
	11	1562	61 1/2
	12	1702	67
	Extension Unit	6	838

With openings above 1702mm high it is necessary to stack sets of louvres on top of each other. To do this a specially modified 6 Blade louvre is available called a '6 Blade Extension Unit'. This can be used in conjunction with all the above sizes.

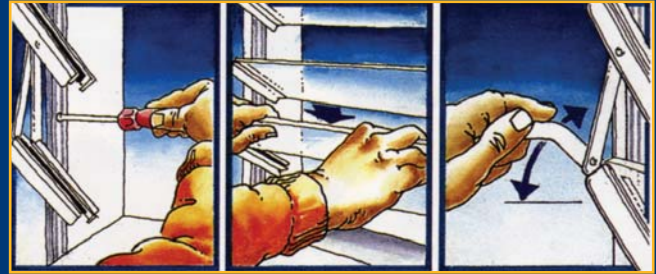
For information on this Ullrich product, either, contact your Ullrich salesperson, refer to the back of this brochure for your nearest Ullrich Aluminium Sales Centre, or freephone 0800 500 338 for assistance.

ULLRICH ALUMINIUM CO LTD
PO Box 98 843 SAMC
Manukau City New Zealand
Tel 09 262 6262 Fax 09 262 6265
alkalum@uacl.co.nz www.ullrich-aluminium.co.nz



INSTALLATION INSTRUCTIONS

- Before installing the louvre fittings, make sure the frame is square and true throughout. Failure to observe this fundamental instruction will cause the louvres to be stiff in operation and could result in air and water leakage.
- When screwing the louvre mullions to the side frame ensure that they are exactly parallel and opposite each other. Providing the frame is plumb in all directions this may be done easily by scribing a guide line down either jamb at equal distance from the outer face.
- Ease back the glass retaining clips and then insert the glass blade. When this is fully home the clip must be bent over the top edge to retain the blade in its correct position.
- The louvre must be in the locked position when fitting the sill-board at the bottom and the cover bead at the top. These should be brought up to but NOT pushing against the glass. This will ensure the weather-proof seal between the blades is maintained. This is most important as most complaints concerning faulty operation of the louvre are due to incorrect positioning of the sill-board or cover bead forcing against the glass preventing the blades sealing correctly.



Durability Statement - Cooper Louvres are anodised aluminium window louvres with aluminium pivots. Anodised aluminium has good durability in most environments in New Zealand, but must be washed down regularly to maintain its appearance. The colours of the anodising may fade as time passes, but this does not represent a problem to the overall durability of the system. As part of the cladding, a durability of 15 years is required by the New Zealand building code. When

- installed and maintained in accordance with the manufacturer's instructions
 - washed down regularly to remove deposited salt and dirt
 - not used in the corrosion "hot-spots" of geothermal areas, as determined by the local authority
 - not used in areas of heavy industrial pollution these louvre frames will be durable for 15 years. As mentioned, regular washing down is very important - the specified life can probably be attained in many situations with minimal washing down, but the appearance and ultimate durability of the frames will be severely reduced.
-



Phone for your nearest
ULLRICH ALUMINIUM SALES CENTRE

AUSTRALIA - 1300 650 075

NEW ZEALAND - 0800 500 338

- ALUMINIUM EXTRUSIONS
- ROLLED PRODUCTS
- FASTENINGS
- LADDERS
- SCAFFOLDS
- ULLTRACLAD CLADDING
- WINTEC WINDOWS & DOORS
- BUILDING PRODUCTS
- DECORATIVE METALS
- TEKNA MACHINERY

Map key:
 + MANUFACTURING
 ● SALES & DISTRIBUTION
 * EXTRUSION PLANT

Representative and franchised operations throughout the South Pacific

ULLRICH ALUMINIUM PTY LTD
 PO Box 2182 Smithfield NSW 2164
 185-187 Woodpark Rd Smithfield Australia
 Tel +61 2 8787 7400 Fax +61 2 9725 2784
 ullrich@ullrich.com.au www.ullrich.com.au

ULLRICH ALUMINIUM CO LTD
 PO Box 98 843 SAMC
 Manukau City 2240 New Zealand
 Tel +64 9 262 6262 Fax +64 9 262 6265
 alkalum@uacl.co.nz www.ullrich-aluminium.co.nz