

DIE No	DESCRIPTION
UA 1371	FRAME 20mm
UA 1372	FLANGED FRAME 20mm
UA 1641	FLANGED FRAME 25mm
UA 1642	FRAME 25mm

DIAGRAMS ACTUAL SIZE UNLESS
OTHERWISE INDICATED.
DIAGRAMS ARE SCHEMATIC ONLY
AND NOT INTENDED AS
SPECIFICATION DRAWINGS.
OAD = OVERALL DIMENSIONS
P = EXT PERIPHERY

© ULLRICH ALUMINIUM CO LTD



UA 1371

FRAME 20mm
kg/m 0.283 P 76
OAD 19 x 19

UA 1372

FLANGED FRAME 20mm
kg/m 0.318 P 93
OAD 27.5 x 19

UA 1641

FLANGED FRAME 25mm
kg/m 0.343 P 114
OAD 31.9 x 25.4

UA 1642

FRAME 25mm
kg/m 0.315 P 102
OAD 25.4 x 25.4

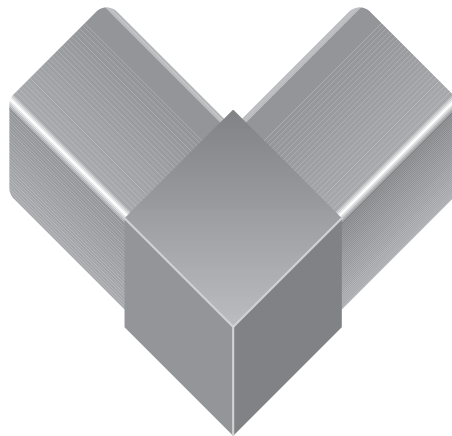
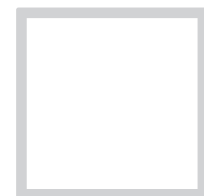
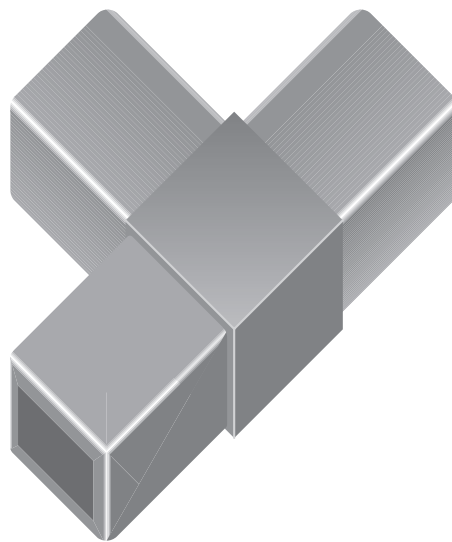
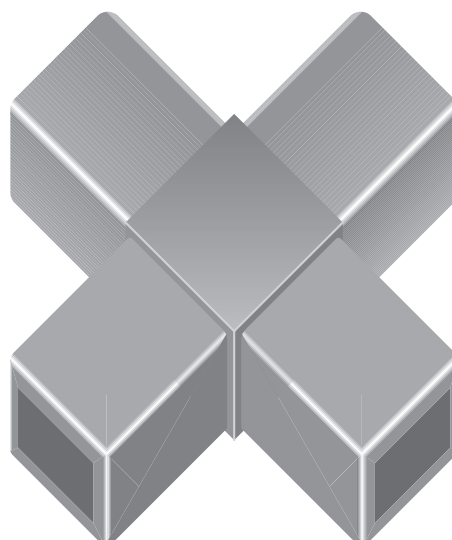
Description

The Ullrich Handyman® Modular Furniture System uses a tube-and-jointer construction for DIY shelving, storage, desking and display. Using a rubber mallet, the system can be assembled in minutes, ready for shelving and panelling of your choice.

The finished units are sturdy yet lightweight, can be disassembled for storage or transit, and can be rearranged or extended for changing circumstances.

Your choice of 20mm or 25mm profile can be pre-cut and epoxy powder-coated in your choice of colour. Jointer components are standardly available in black or white.

See the Handyman® brochure for more details.

2 WAY CORNER JOINTER**UA 1641****UA 1642****3 WAY T SHAPE JOINTER****UA 1371****UA 1372****4 WAY X SHAPE JOINTER****3 WAY Y SHAPE CORNER JOINTER**

DIAGRAMS ACTUAL SIZE UNLESS OTHERWISE INDICATED.
DIAGRAMS ARE SCHEMATIC ONLY AND NOT INTENDED AS SPECIFICATION DRAWINGS.

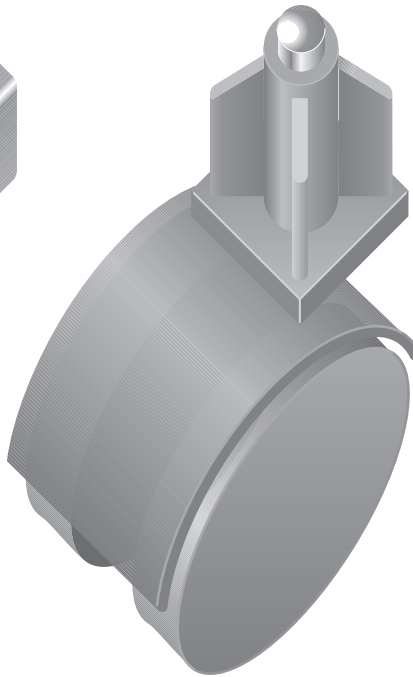
OAD = OVERALL DIMENSIONS
P = EXT PERIPHERY

© ULLRICH ALUMINIUM CO LTD

4WAY Y SHAPE JOINTER

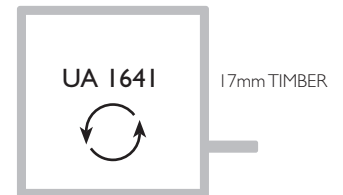
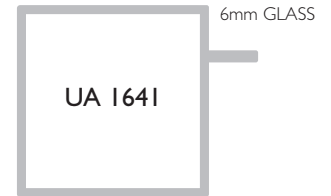


CASTOR



Panelling Options

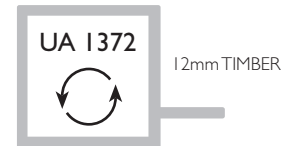
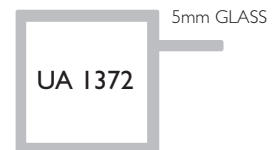
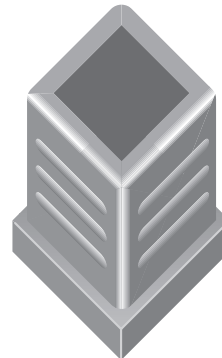
25mm flanged tube is designed to accept 17mm timber or 6mm glass, and 20mm flanged tube accepts 12mm timber or 5mm glass.



5WAY JOINTER



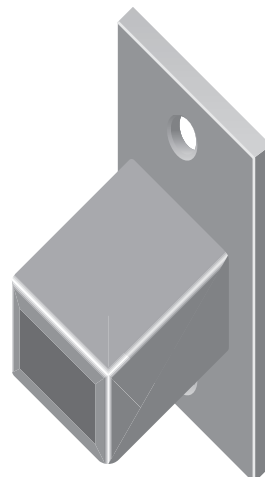
END CAP



6WAY JOINTER



MOUNTING BRACKET



DIAGRAMS ACTUAL SIZE UNLESS OTHERWISE INDICATED. DIAGRAMS ARE SCHEMATIC ONLY AND NOT INTENDED AS SPECIFICATION DRAWINGS.
OAD = OVERALL DIMENSIONS
P = EXT PERIPHERY
 © ULLRICH ALUMINIUM CO LTD



Preliminary planning

To simplify planning and assembly, minimise the number of different tube lengths for your construction to as few as possible.

Only four standard tube lengths are needed as the basis for many different types of construction.

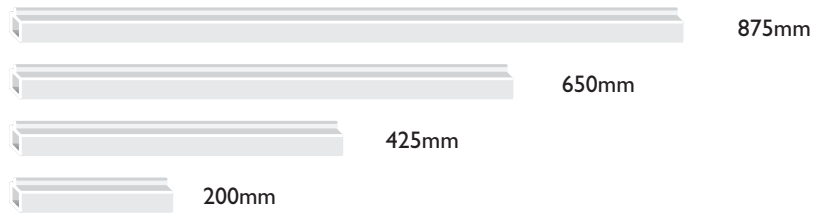
In assembly, these modules conform to accepted ergonomic work-height standards for desks and benches, and generally cater for typical dimensions of home appliances, computers, office files and books.

Here, jointed selections of shorter modules combine in many different ways to equal the lengths of jointed longer tube modules. This offers multi-strata design flexibility, vertically and horizontally, to customise storage or workspace for maximum efficiency and economy, while ensuring even finished widths and heights in the assembled unit no matter how varied the internal construction.

This facilitates customised construction, for example, various sized filing compartments above or below a wider desktop, or construction of shelves of various widths, depths and heights to suit different sizes of books, displays or audio-video appliances in a wall unit.

Vertical panelling and hinged or sliding doors can be incorporated into any Handyman™ construction.

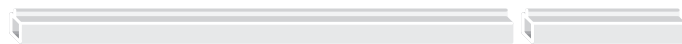
A multitude of furniture designs from only four tube lengths (example)



How the tube modules work together for furniture that fits



One 875mm module (with any two jointers) is equal to:



One 650mm module and one 200mm module (with any three jointers)



Two 425mm modules (with any three jointers)

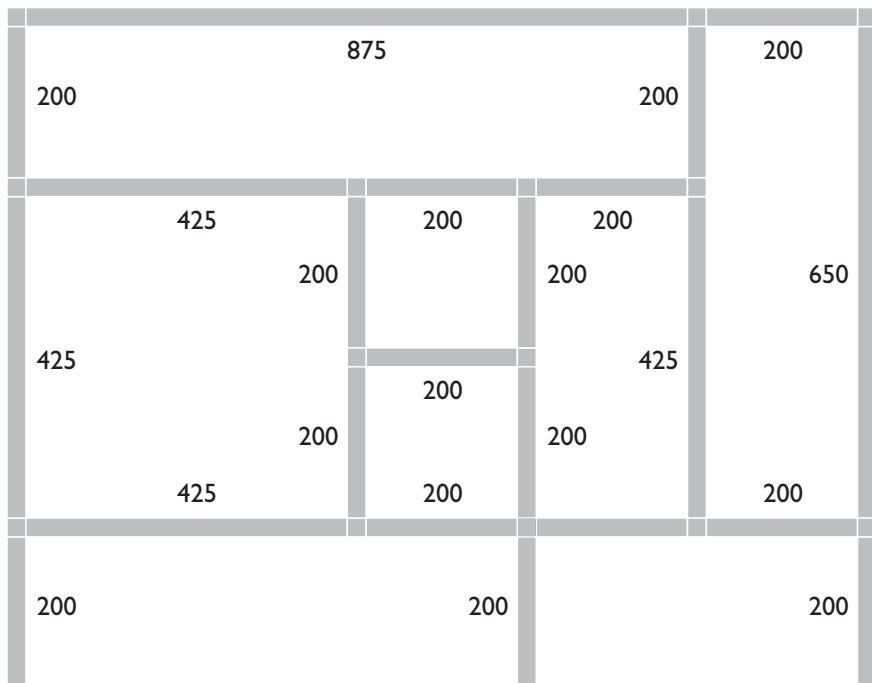


One 425mm module and two 200mm modules (with any four jointers)



Four 200mm modules (with any five jointers)

Modular construction offers flush-fitting furniture with multiple storage options



DIAGRAMS ACTUAL SIZE UNLESS OTHERWISE INDICATED. DIAGRAMS ARE SCHEMATIC ONLY AND NOT INTENDED AS SPECIFICATION DRAWINGS.
OAD = OVERALL DIMENSIONS
P = EXT PERIPHERY
 © ULLRICH ALUMINIUM CO LTD